

الكوثر للإعمال الصحية ذ.م.م

# AL KAWTHER SANITARY WORKS L.L.C



FABRICATED  
PLUMBING PRODUCTS



AL KAWTHER SANITARY WORKS L.L.C

☎ 02-5508211, 02-5508212 📱 055 594 8211, 052 762 8212 📞 052 811 4849, 050 971 8211

🐦 @al\_sanitary 🌐 AL Kawther Works 📷 \_alkawther\_ 📺 alkawther Abudhabi ✉ alkawtherworks@gmail.com 🌐 alkawtherabudhabi.com

# INTRODUCTION

We are pleased to introduce ourselves

**Al Kawther Sanitary Works L.L.C** is a specialist in PVC and GRP Fabrication The company has been operational since 2011 and has been associated with many prestigious projects catering to their needs for quality products.

We have a comprehensive products range readily available to satisfy the needs of our customers.

We are committed to quality and fully understand the needs of the users.

Some of the prestigious projects that we have been associated with in the UAE includes Jabel Ali Airport, JAFZA Convention centre, Jumeirah Lake Tower, Dubai Health Care, Burj Dubai Lake Hotel, Nakheel Projects and many more.

We have qualified technical team and always available to assist for any kind of technical issues and ready to visit the sites if required.

## PRODUCT LIST

- Grease Traps (Type ABC & D)
- Electrical & upvc long radius bend
- Dry Manholes (As per Drawing)
- Cross Tee & Y Branches
- Different types of Funnels
- Blank Flanges
- Street Light Conduit Bends
- Catch Basins
- End caps up to 400mm
- Grease Interceptors, Oil Traps
- Gully Traps (Road Gully, Dry Gully)
- Ramp Trench Gully Drain
- High Pressure Non standard fittings (with GRP coating)
- Reducer Y&T-Branches
- Pressure Headers
- Different type Offsets
- Threaded Adaptors, Push fit Adaptors
- Solvent Coupler & Repair Coupler
- Pressure Breaking Chamber
- Sand Trap Buckets
- Perforated Flange Pipes & Sockets
- Stack Drain Speed Breakers
- Soak way, Silt Buckets
- Slotted Land Drain Pipes
- Puddle Flanges (with/without gritting)
- Reducers, Sockets and Bell Mouths

## METERIAL USING FOR FABRICATION

**Hepworth  
National Plast**

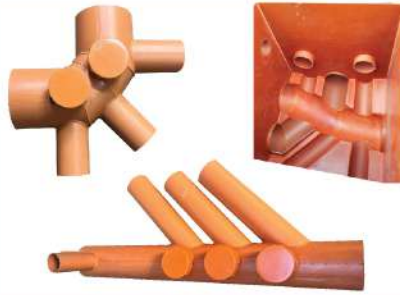
**Cosmoplast  
Terrain**

**Anabeeb  
Atlas**

**Polyfab  
Power Plast**



**GREASE TRAP A  
(HOME KITCHEN & VILLAS)**



**UPVC DRY MANHOLE &  
MANHOLE BENCHING**



**PUDDLE FLANGE  
(PVC, HDPE, PPR)**



**GREASE TRAP B**



**CATCH BASIN**



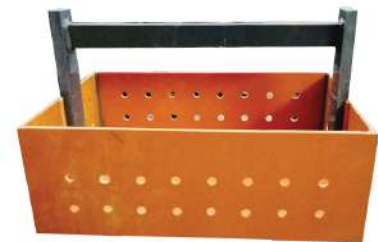
**PVC FABRICATED TEST  
PIG (MANDREL)**



**GREASE TRAP C**



**GULLY TRAPS**



**SAND TRAP BUCKET**



**GREASE TRAP D**



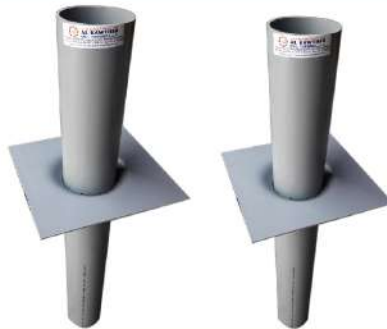
**LONG RADIUS BENDS**



**FABRICATED COUPLER**



**SS GREASE TRAP AG1,2,3**



**PERFORATED FLANGE**



**FABRICATED END CAPS**



**SS PUDDLE FLANGE**



**HDPE FABRICATED DMH**



**HDPE DRY GULLY TRAP**



**FABRICATED FITTINGS**



**HDPE FABRICATED GULLY TRAP**



**BELL MOUTH FLANGES**



**PVC HEADER &  
PVC CHANNEL GRATING**



**SOAK WAY FIT**



**ANTI VORTEX PLATE**



**ROAD GULLY**



**PVC STREET LIGHT BEND**



**GRP LAMINATED FITTINGS**



**GRP SEALING PLATE**



**GI PUDDLE FLANGE**



**SLOTTED LAND DRAIN PIPES**



**FABRICATED CROSS TEE**



**REPAIR COUPLER RR**



**FABRICATED PVC SADDLE**



**FABRICATED AIR VENT**



**FABRICATED CROSS TEE RR**



**PVC THREADED PIPE**

## Where to Use Grease Traps:

Grease traps are rarely used for homes. Their main application is in treating kitchen waste waters from hotel kitchens, cafeterias, restaurants, hospitals, schools, bars, factories, clubs, churches, schools, or other commercial food preparation or cooking areas and other institutions with large volumes of kitchen wastewater.

## Where to Install Grease Traps:

The grease trap must be installed in the waste line leading from sinks, drains, food waste grinders, garbage can washers, dumpster drains, or other similar fixtures.

Effluent from the grease trap is deposited in the septic tank along with the other water carried waste from the facility.

## When to Clean Grease Traps:

Grease traps should be cleaned regularly to prevent clogging. It is recommended that grease traps be cleaned when seventy-five percent (75%) of their grease retention capacity is reached.

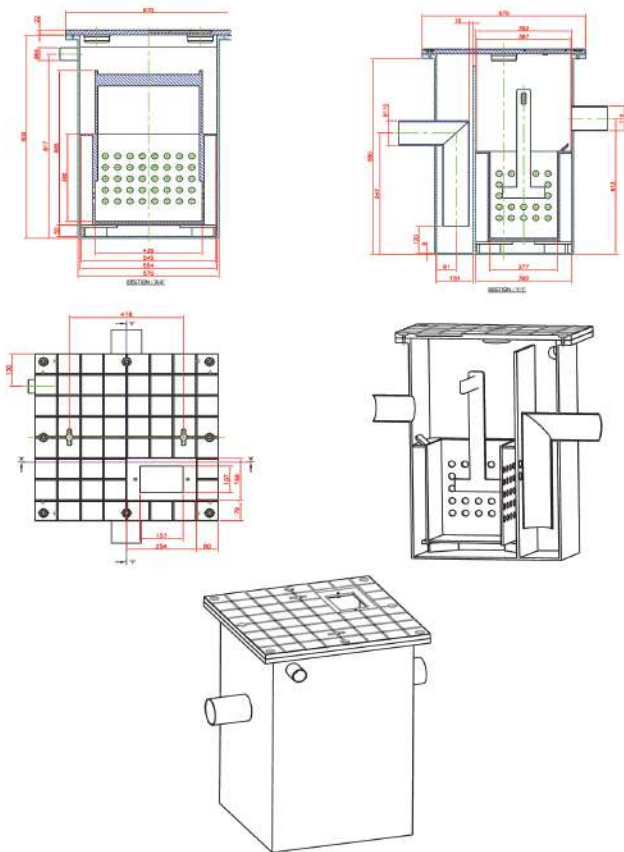
## Material of Grease Trap

Cosmoplast Grease Traps are fabricated from uPVC sheets and pipes, which are manufactured according to the international standards for drainage applications (BSEN1329 and BSEN1401).

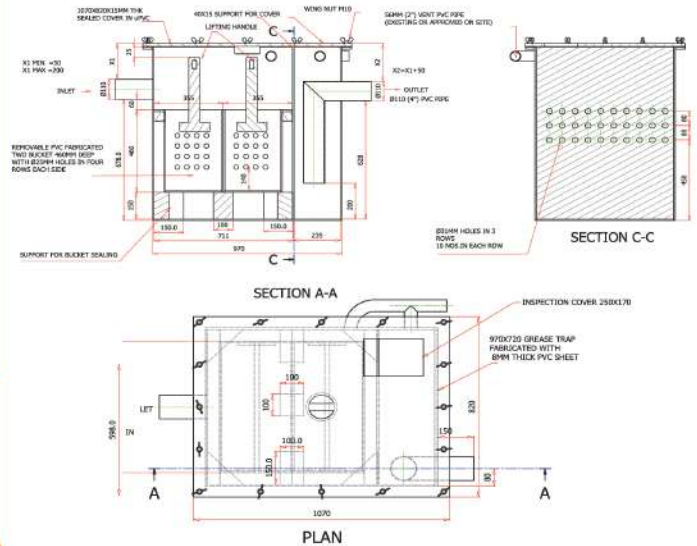
## Sizes of Grease Trap

Grease traps are usually manufactured in 4 types, Type A, Type B, Type C and Type D

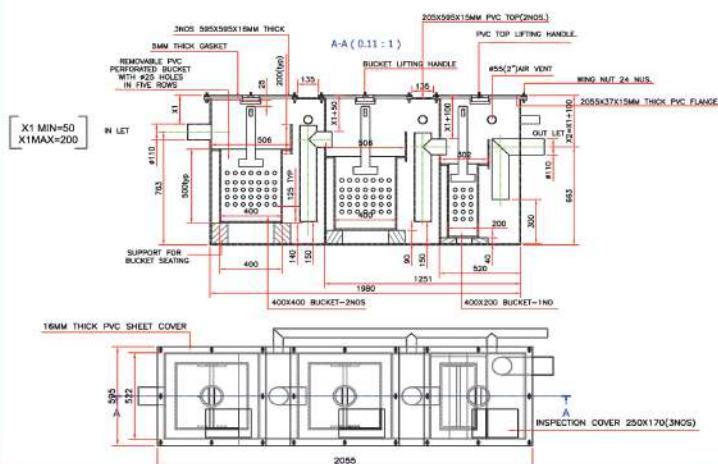
### GREASE TRAP - A



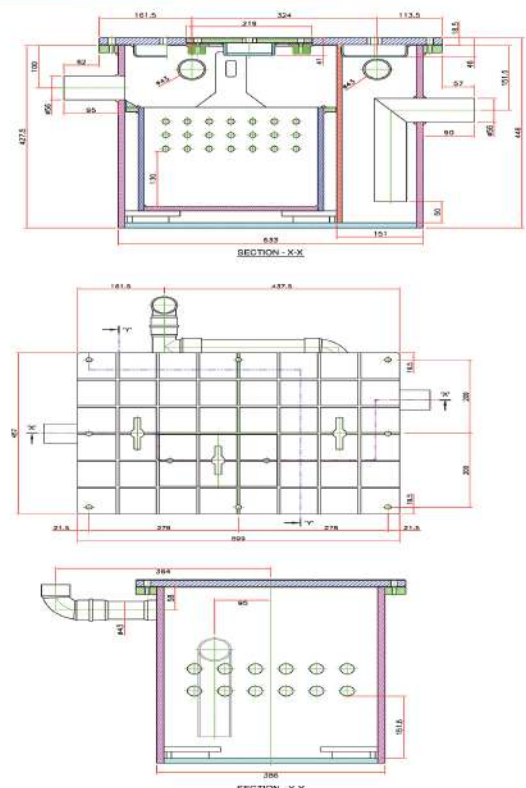
### GREASE TRAP - B



### GREASE TRAP - A



### GREASE TRAP - D



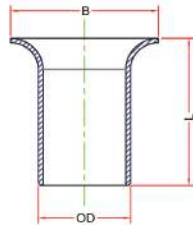
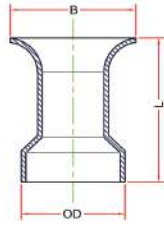
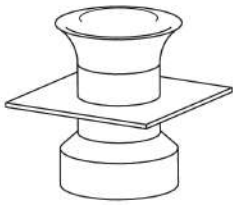


## uPVC BELL MOUTH SOCKET

Bell mouth with puddle flange

Socket End Belt Dimension

Spigot End Belt Dimension



ISOMETRIC VIEW

SECTIONAL VIEW

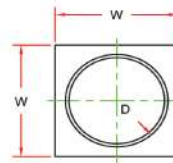
SECTIONAL VIEW

OD (Inch)	OD (mm)	LENGTH (L) (mm)	BELL END (B) (mm)
4	114.1	250	145
6	168.0	250	190
8	218.8	300	265
10	272.6	400	330

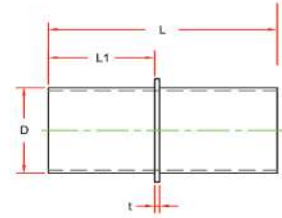
### GREASE TRAP - B

Note: The dimensions can be altered to suit specific requirements

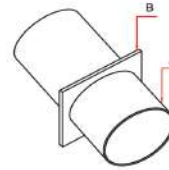
## uPVC PUDDLE FLANGE



TOP VIEW



FRONT VIEW



ISOMETRIC VIEW

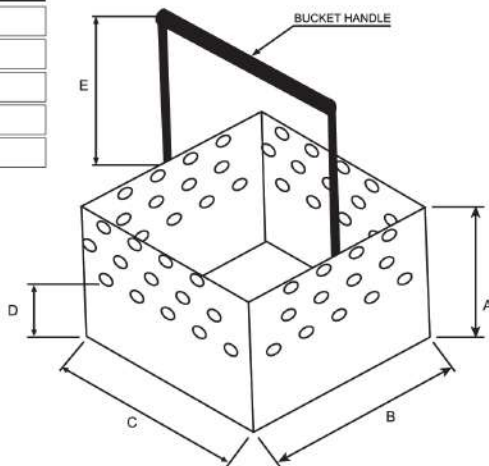


Note: The dimensions can be altered to suit specific requirements

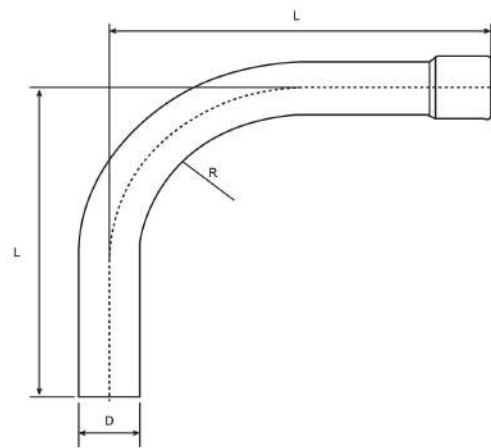
## uPVC SAND TRAP

### Dimensions:

A	: mm
B	: mm
C	: mm
D	: mm
E	: mm



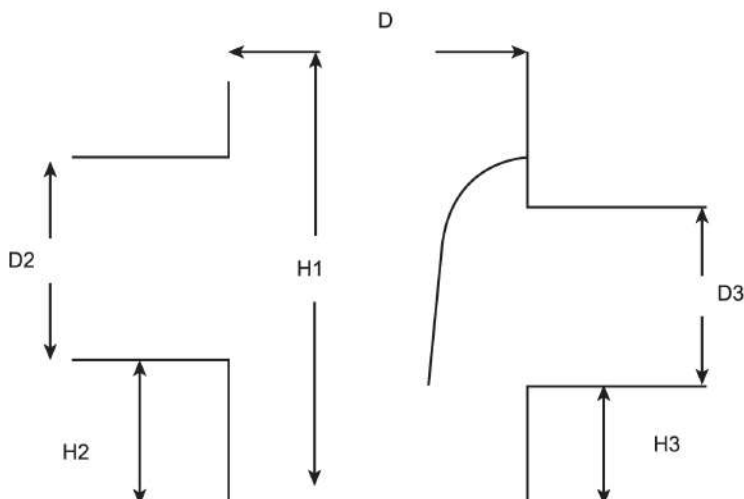
## LONG RADIUS BEND



Pipe Size (OD - MM)	Radius - R (MM)	Angle

Socket Type :  Solvent

## GULLY TRAP



### Specifications:

D	: mm
D2	: mm
D3	: mm
H1	: mm
H2	: mm
H3	: mm

### Requires

#### Separator :

- D2 Side
- D3 Side

#### Top Cover:

- Grated Cover
- Close Cover with Bolts and Nuts

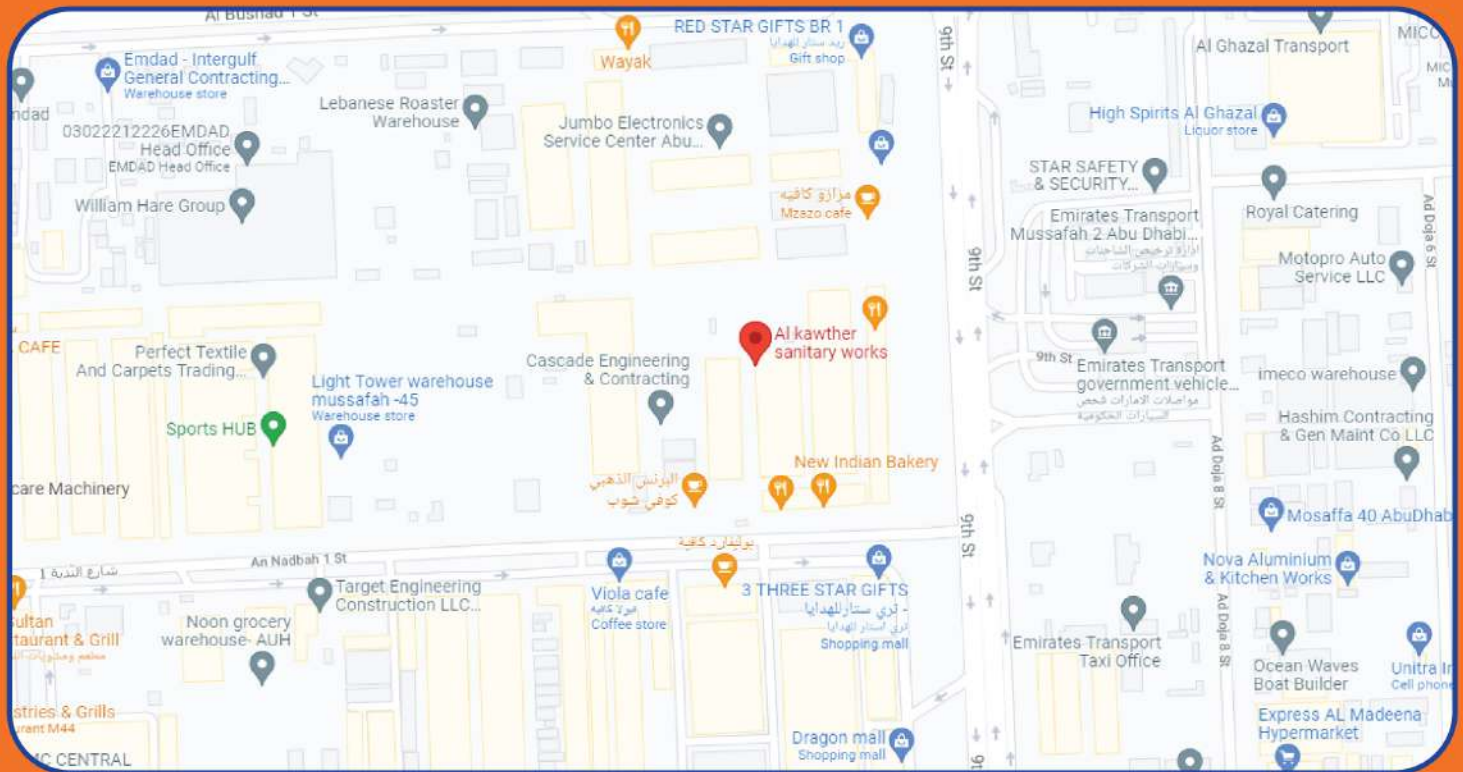


SCAN ME



# الكوثر للأعمال الصحية ذ.م.م

## AL KAWTHER SANITARY WORKS L.L.C



### AL KAWTHER SANITARY WORKS L.L.C

P.O. No: 93077, Plot No.8, Store No.50, Near Three Star Gift Market  
Mussafah M-45, Abu Dhabi - U.A.E.

Mobile: +971 52 820 5636, Tel. No.: 02-5508211, 02-5508212

E-mail: [alkawtherworks@gmail.com](mailto:alkawtherworks@gmail.com) | Web: [www.alkawtherabudhabi.com](http://www.alkawtherabudhabi.com)